

AIA TOWER

183 ELECTRIC ROAD

Leasing Agent 租務代理



HENDERSON LEASING AGENCY LIMITED
恒基租務代理有限公司
牌照號碼 License No. C-000035



REALISING *Your* IMAGINATION
聯動·你想像

Hendersonlandhk

www.hld.com

Leasing Hotline 租務熱線：

2908 8338



www.aiatower.com.hk

香港中環金融街8號國際金融中心二期73樓

73/F, Two International Finance Centre, 8 Finance Street, Central, Hong Kong



Conveniently centred at the heart of Hong Kong's prime business district with superb transportation network access, AIA Tower is a Grade A commercial building comprising both office and F&B floors, along with cutting-edge facilities and a magnificent harbour vista. Following its recent renovation, the lobby area and ground floor retail shops offer shoppers and visitors a fresh new ambience while tenants enjoy a more comfortable office environment.

Facilities

The 43-storey AIA Tower, with a floor plan spanning approximately 13,000 sq. ft. of lettable space, provides an expansive office layout with spectacular harbour views from a host of units. The professionally managed leisure club located on the 7th and 8th floors features an outdoor swimming pool, and a fitness centre open to tenants from Monday to Saturday.

Other advanced specifications and facilities include:

- Fibre optic backbone
- Emergency power supply
- Raised floor with trunking system
- Metal suspended ceilings with light fixtures
- Clear ceiling height of 2.5 metres (8'2")



友邦廣場位處港島區商業中心地帶，交通網絡完善，集合辦公室與餐飲商舖於一身，是配套先進的臨海甲級商廈。經翻新後，電梯大堂及地面商舖以全新形象示人，為租戶提供更舒適的辦公環境。

完善配套 成就甲級商廈

友邦廣場樓高43層，每層出租面積約13,000平方呎，辦公室空間寬敞舒適，部分單位享優美維港景致。七樓及八樓為休閒會所，租戶可於星期一至星期六享用戶外游泳池及健身中心，舒展筋骨。



其他先進配套設施包括：

- 光纖通訊系統主幹
- 緊急後備電源
- 架高地台連內置電線管道
- 金屬天花及燈盤
- 寫字樓樓底淨高2.5公呎（8呎2吋）

BUSINESS DISTRICT VICINITY

毗鄰商圈 掌握商貿先機

AIA Tower, situated just next to the Wanchai and Causeway Bay commercial districts, is just a one minute's walk from the Fortress Hill MTR station and offers true convenience with its close proximity to numerous bus routes connecting to other districts and business areas. The Tower's 6-level car park also provides tenants with plenty of parking spaces. It is only 5 minutes drive from North Point to Central via the new Central - Wan Chai Bypass, ensuring more flexible daily schedule planning.

友邦廣場毗鄰灣仔及銅鑼灣商業區，徒步至炮台山地鐵站只需一分鐘，配合附近的多條巴士路線，輕鬆遊走各區。友邦廣場更設有六層停車場，為租戶提供充足車位。經中環灣仔繞道，由北角至中環只需約5分鐘，安排更加彈性。



This location map is for reference only and not to scale. 此位置圖只供參考，並非按照比例繪畫。
Source : Highways Department Website 資料來源：路政署網頁：www.cwlb-hydhk

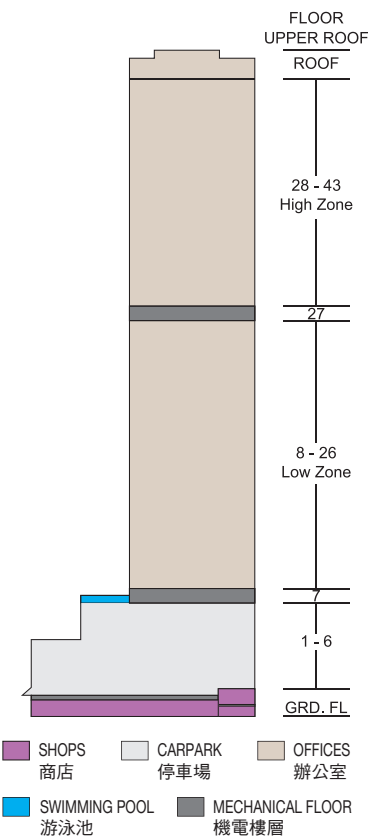
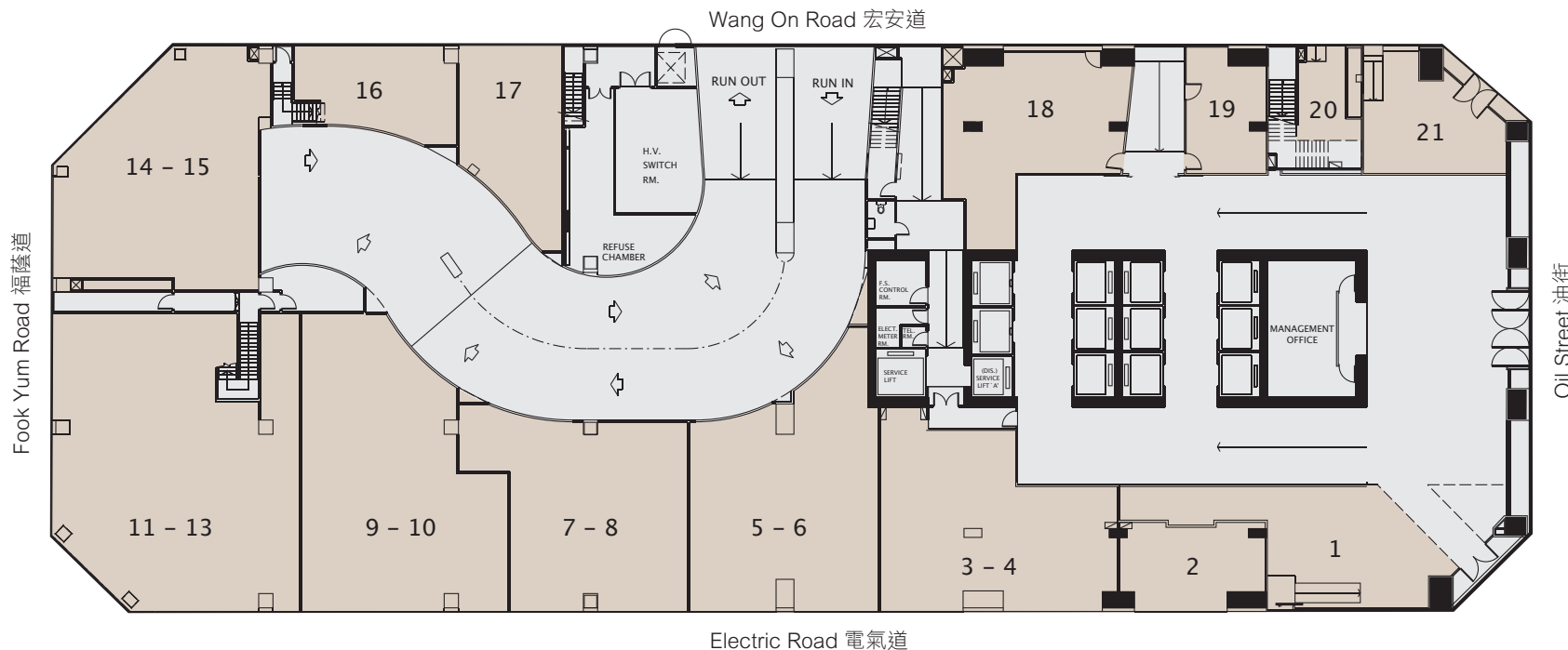
聲明 Disclaimer

本說明書編制時已力求確保內容準確，惟業主及市務及租務顧問概不就該等內容之準確性負責。本說明書所載資料乃基於誠信而編制，惟並不構成任何合約或任何簽署合約前事實陳述或其他方面之組成部份。租戶及讀者須負責自行查證所提供規格資料之準確性，無論是透過實地視察或其他方式。

While great care was taken in preparing this pamphlet, neither the landlord nor its agents take responsibility for its content. The information contained herein was compiled in good faith, but it should not be construed as forming part of any contract or any pre-contractual representation of fact or otherwise and would-be tenants and readers are responsible for satisfying themselves, whether by inspection or other means, as to the accuracy of any specifications given.



Ground Floor Plan



High Zone 28th-43rd Floor Plan



Wang On Road 宏安道



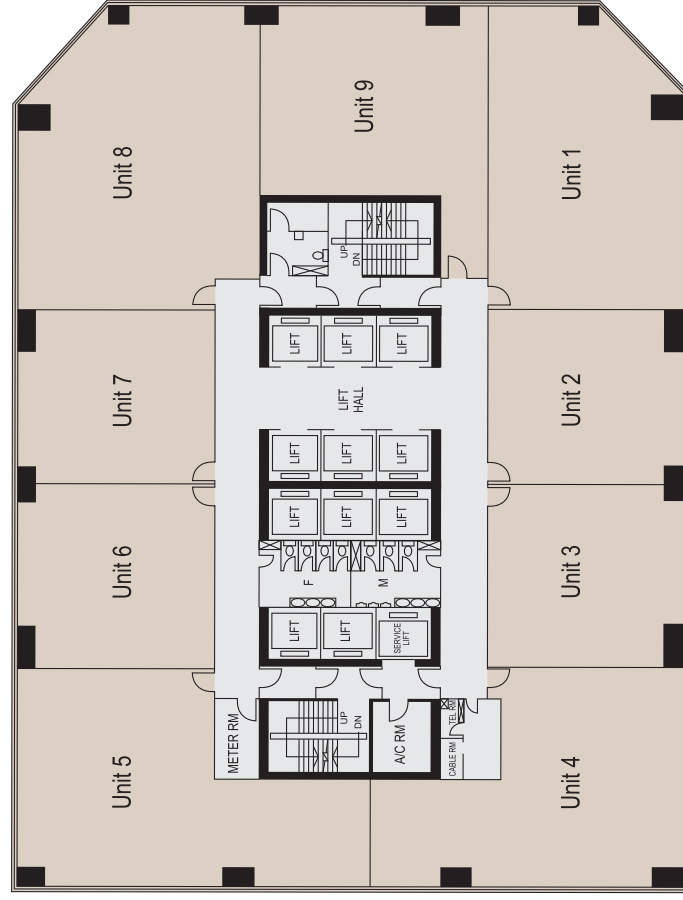
Fook Yum Road 福祿道

Oil Street 油街

Electric Road 電氣道

Low Zone 8th-26th Floor Plan

Wang On Road 宏安道



Fook Yum Road 福祿道

Oil Street 油街

Electric Road 電氣道